

Hall Technique Stainless Steel Crowns

Treating decayed baby molars with Stainless Steel Crowns

What is the Hall Technique?

The Hall Technique involves placing a stainless steel crown on to a baby tooth to treat decay. This helps to stop decay from progressing further. The crown also protects the entire tooth from further decay on other surfaces. Both the crown and the baby tooth fall out naturally, usually at around 10 to 12 years old.

The advantages are:

- No injection needed for numbing
- No drilling required
- Likely to last longer than a filling
- Usually only takes a few minutes to size and fit



How to look after a crown

- It is important that your child continues to brush their teeth twice a day with a fluoride toothpaste
- Attend regular dental check-ups to check the crown's health

How is the crown put on?

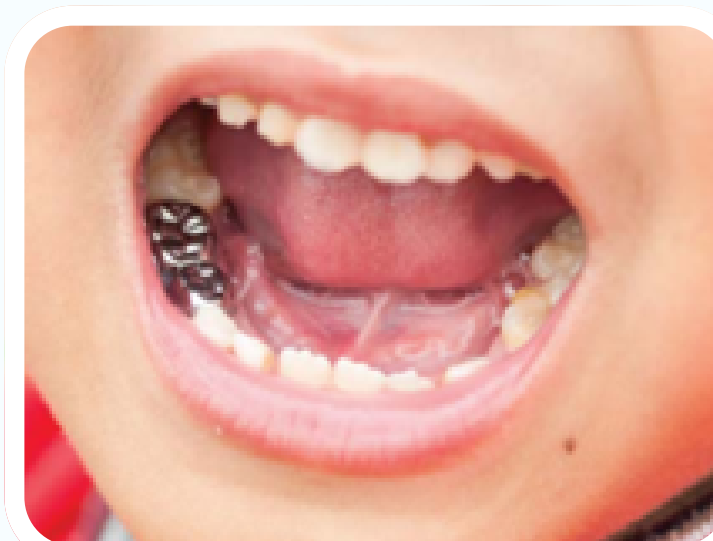
Blue 'spacers' are usually placed a few days beforehand on either side of the tooth. This makes space to fit the crown.



During the second visit, we find the correct-sized crown and place dental cement inside it. Your child will help by biting down on a cotton roll to position the crown over their tooth, this may be a little uncomfortable.



Afterward, their tooth may feel slightly high and unusual when biting. Their gums might also feel a bit tender, but these sensations will subside after a few hours. The number on the side of the crown will fade away.



For information about free dental care for under 18s:

Visit: www.HealthNZ.govt.nz/BeeHealthy Call: 0800 TALK TEETH (825 583)

This resource is available from healthed.govt.nz HE1258 April 2026