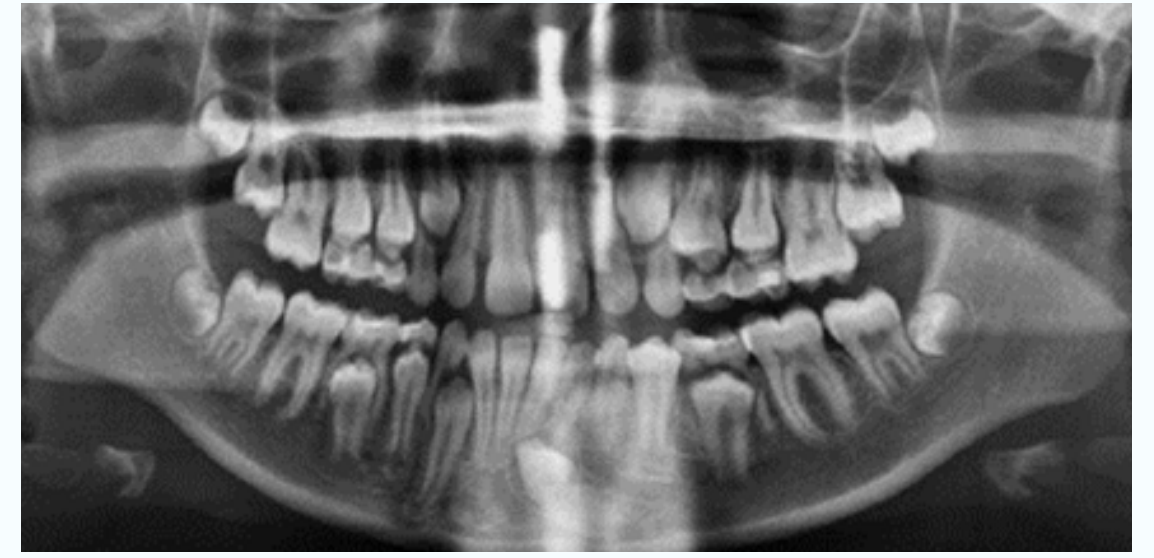


OPG X-ray

What is an OPG

An OPG (Orthopantomogram) is a dental x-ray that captures images of both the upper and lower jaws. It's also referred to as a panoramic or panorex x-ray. This imaging technique provides a comprehensive view of the lower face, spanning ear to ear including the jaw bone and surrounding tissues.



Why does my child need an OPG?

An OPG shows the number and position of all the teeth including those not yet erupted. It differs from the smaller x-rays called bite-wings that we routinely take of the back teeth.

We may recommend an OPG X-ray for your child to:

- Check for tooth decay. If your child cannot tolerate bite-wing x-rays, then an OPG is a quick and non-invasive alternative that doesn't require films or holders inside the mouth, although it is less accurate for detecting decay.
- Identify and refer orthodontic issues, such as teeth that are missing or in the wrong place.
- Investigate dental injuries or trauma.
- Evaluate the development of their teeth and jaw, including early detection of any abnormalities in the jaw or facial structure.

What happens during the procedure?

- Your child will need to remove their glasses or any jewellery including piercings and hair clips from their head and neck.
- They will stand against the machine and bite onto a small plastic block to stay in position.
- The machine will rotate around their head for a few seconds to capture the x-ray image, it will not touch them.

Is it safe?

Yes, OPG x-rays are safe. The amount of radiation used is very low, equivalent to a few days of natural background radiation.

What happens after?

- The x-ray image will be displayed on a computer screen for the therapist to examine and will be stored on their Bee Healthy file.
- The therapist may be able to discuss the results with you and recommend any necessary treatment or referrals in this appointment. In some cases, a consultation with our community dentist may be required, and we will be in touch to discuss results and next steps.
- If you have any questions or concerns, please don't hesitate to ask.

For information about free dental care for under 18s:

Visit: www.HealthNZ.govt.nz/BeeHealthy Call: 0800 TALK TEETH (0800 825 583)